



# Annual Report 2019

2019



# ELIMINATING CHILDHOOD CANCER THROUGH LEADING EDGE RESEARCH

The Pediatric Cancer Research Foundation identifies and funds leading edge researchers that demonstrate the best hope for curing childhood cancer.

## PEDIATRIC CANCER FACTS



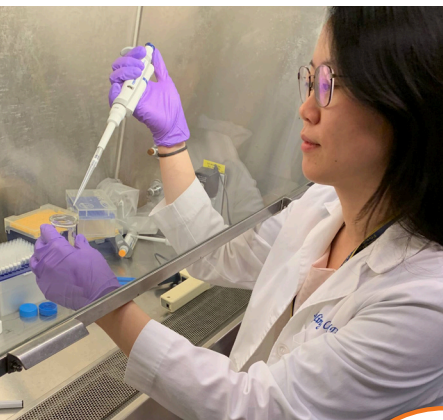
Cancer is the number 1 cause of disease-related death in children in the United States.



Worldwide, a child is diagnosed with cancer every 2 minutes.

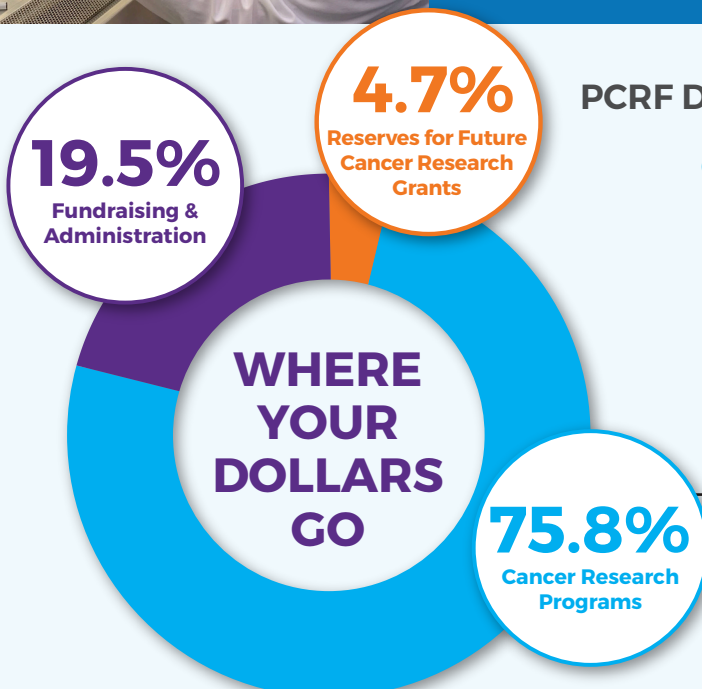


Less than 4 percent of government funding is dedicated to childhood cancer research.



## RANKING

The Pediatric Cancer Research Foundation continues to be awarded a Platinum rating, the highest possible ranking from Guidestar USA. Donors may have confidence in PCRf's ability to fund the best researchers in the world, with the utmost attention to financial efficacy and transparency.



## PCRf DOLLARS EXPENDED SINCE 1982

### Cancer Research Programs

\$36,468,635 / 75.8%

### Fundraising and G&A

\$9,361,513 / 19.5%

### Reserves

\$2,256,435 / 4.7%

### Total Dollars Raised

\$48,086,583 / 100%



# FINANCIALS

The Pediatric Cancer Research Foundation is an independent, 501(c)(3) non-profit corporation that is privately supported through generous donations from individuals, charitable foundations and businesses. Of every dollar raised, over 80 percent goes directly to research that impacts countless young lives.

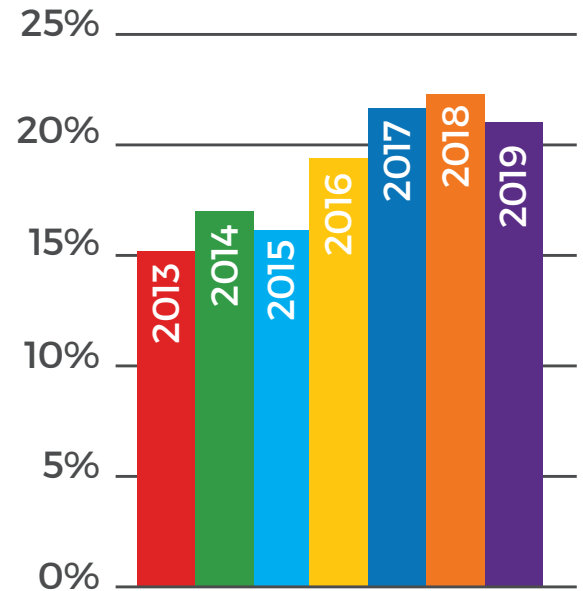
## STATEMENT OF FINANCIAL SUPPORT

CURRENT ASSETS	2019	2018
Cash & Cash Equivalents	\$2,448,231	\$1,463,009
Investments	\$400,000	\$750,000
Contributions Receivable	\$141,286	\$523,678
Other Assets	\$23,483	\$57,061
Property & Equipment, Net	\$27,020	\$70,804
<b>TOTAL ASSETS</b>	<b>\$3,040,020</b>	<b>\$2,864,552</b>
<b>LIABILITIES &amp; NET ASSETS</b>		
Accounts Payable & Accrued Expenses	\$53,326	\$119,012
Grants Payable	\$696,689	\$364,381
Deferred Revenue	\$33,570	\$31,228
<b>Total Liabilities</b>	<b>\$783,585</b>	<b>\$514,621</b>
<b>NET ASSETS</b>		
<b>Without Donor Restrictions</b>	<b>\$2,256,435</b>	<b>\$2,349,931</b>
<b>TOTAL LIABILITIES &amp; NET ASSETS</b>	<b>\$3,040,020</b>	<b>\$2,864,552</b>

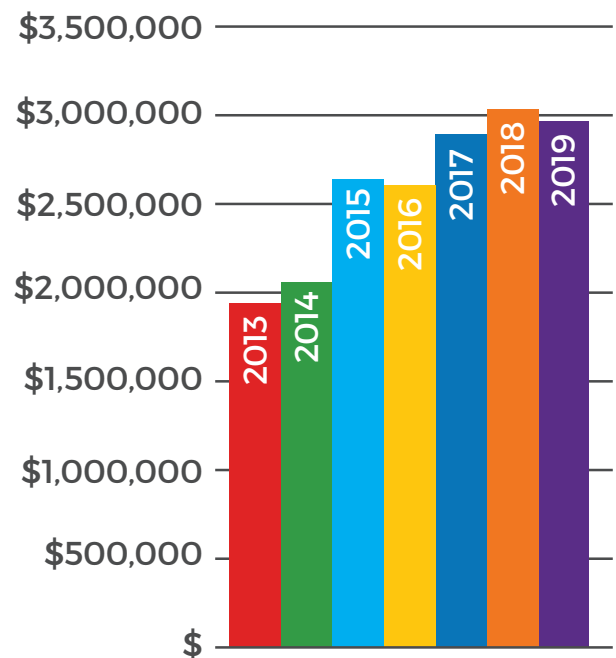
## OPERATING REVENUE & OTHER SUPPORT

	2019	2018
General Public Support	\$1,703,148	\$1,719,912
Special Events and Programs	\$1,258,757	\$1,029,306
International Symposium		\$277,341
<b>TOTAL REVENUE &amp; SUPPORT</b>	<b>\$2,961,905</b>	<b>\$3,026,559</b>
<b>EXPENSES</b>		
Program Services - Pediatric Cancer Research	\$2,424,143	\$2,421,019
<b>Supporting Services</b>		
Management and General Fundraising	\$214,946	\$201,534
	\$416,312	\$469,407
<b>TOTAL EXPENSES</b>	<b>\$3,055,401</b>	<b>\$3,091,960</b>
<b>INCREASE (DECREASE) IN NET ASSETS</b>	<b>(\$93,496)</b>	<b>\$64,401</b>
<b>UNRESTRICTED NET ASSETS AT BEGINNING OF YEAR</b>	<b>\$2,349,931</b>	<b>\$2,415,332</b>
<b>UNRESTRICTED NET ASSETS AT END OF YEAR</b>	<b>\$2,256,435</b>	<b>\$2,349,931</b>

## OPERATING EFFICIENCY Percent of Annual G&A Costs to Revenue



## GROWTH IN NET REVENUE & SUPPORT



# FIGHTING CANCER with RESEARCH

# PCRF

209

64

36

420K

70

## Since 1982

209 Annuals Grants

64 Principal Investigators

36 Leading Institutions

420,000 childhood cancer survivors are alive in the US today.

Over the last 39 years, survival rates for childhood cancer have risen over **70 percent**, growing from 10 percent to over 80 percent.

## Research Gets Results



We are cure seekers, relentless in our quest to eliminate childhood cancer.

Please Join Us!  
[pcrf-kids.org](http://pcrf-kids.org)